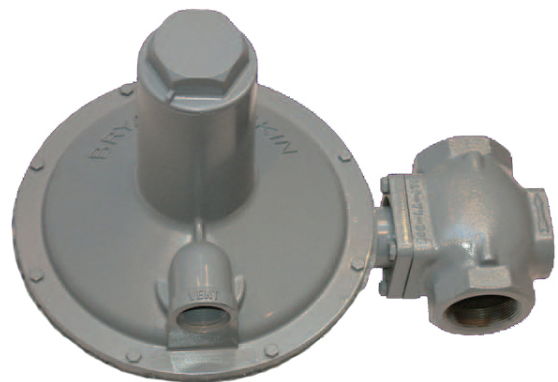


Distributed By

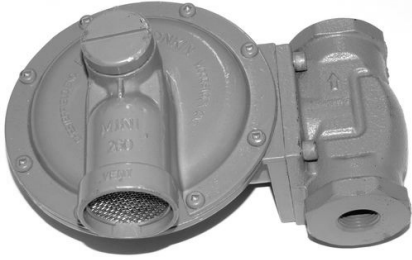


Line Pressure Regulators

CSA 6.22



260R Pressure Regulator



Maximum Inlet Pressure
CSA Certified..... 10 psi

Minimum Inlet Pressure
CSA Certified..... 1 psi

Emergency Exposure Limits
(inlet side only)..... 150 psi

Venting
Complete with internal relief valve (full capacity). Vent Connection: 3/4" FNPT

Mounting
Suitable for multiple-poise mounting. Mount with flow direction as marked on body casting.

Installation
Indoor or outdoor

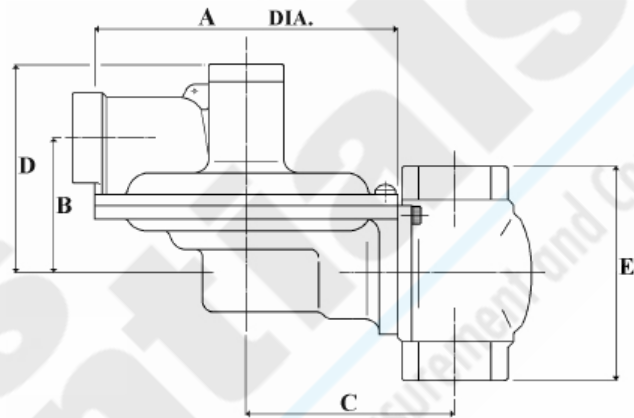
Temperature Rating
> -40° to 60° Celsius
> -40° to 120° Fahrenheit

Body Sizes
> 1/2", 3/4", & 1" FNPT

Weights
> Screwed body - 4.0 lbs. (1.82 kg)

Applications

- ◀ Designed for safe, accurate pressure reduction for gas services to commercial and industrial applications.
- ◀ Lever operated, spring-loaded type
- ◀ Self-aligning valve with lever action for dead-end regulator lockup



260 (screwed body)
Overall Length - 7.5"

A	B	C	D	E
5 1/8"	2 1/2"	3 3/4"	4 1/2"	4"

Materials of Construction

Body	Ductile Iron
Diaphragm Casings	Die Cast Aluminum
Diaphragm	Molded Nitrile Rubber with Nylon Reinforcing
Valve Seat	Buna N Rubber
Diaphragm Plates	Steel
Orifice	Aluminum
Fasteners	Steel
Vent Screen	Stainless Steel
Top Cap	Aluminum



CSA Design Certified
Z21.80 / CAN 6.22

Natural Gas Capacity Tables - 260R

Capacities in SCFH – 7" wc Set Point (1.4" wc Droop)		
Inlet Pressure (psig)	Orifice Size	
	3/16"	1/2" *
1	175	350
2	200	600
5	375	900
10	800	1250

Capacities in SCFH – 14" wc Set Point (3" wc Droop)		
Inlet Pressure (psig)	Orifice Size	
	3/16"	1/2" *
1	150	500
2	200	850
5	250	1200
10	400	1500

Capacities in SCFH – 2 PSI Set Point (11" wc Droop)		
Inlet Pressure (psig)	Orifice Size	
	3/16"	1/2" *
5	350	1050
10	500	1350

Outlet Pressure Range	
Spring Range	Spring Number/Colour
4" – 5 1/2" wc	121 (red)
5" – 9" wc	1001 (silver)
8" – 12" wc *	1235 (orange)
9" – 18" wc	307 (light green)
17" – 30" wc	1021 (natural)
1.0 – 2.5 PSI	1047 (purple)

Max. Capacities On Inches w.c. Outlet:
3/4" outlet connection - 600 scfh
1" outlet connection - 1200 scfh

* = Standard Spring & Orifice As Stocked

Propane Gas Capacity Tables - 260R

Capacities in SCFH - 7" wc Set Point (1.4" wc Droop)		
Inlet Pressure (psig)	Orifice Size	
	3/16"	1/2"
1	275,625	551,250
2	315,000	945,000
5	590,625	1,417,500
10	1,260,000	1,968,750

Capacities in SCFH - 14" wc Set Point (3" wc Droop)		
Inlet Pressure (psig)	Orifice Size	
	3/16"	1/2"
1	236,250	787,500
2	315,000	1,338,750
5	393,750	1,890,000
10	630,000	2,362,500

Capacities in SCFH - 2 PSI Set Point (11" wc Droop)		
Inlet Pressure (psig)	Orifice Size	
	3/16"	1/2"
5	551,250	1,653,750
10	787,500	2,126,250

Outlet Pressure Range	
Spring Range	Spring Number/Color
4" - 5.5" wc	121 (Red)
5" - 9" wc	1001 (Silver)
8" - 12" wc *	1235 (orange)
9" - 18" wc	307 (Light Green)
17" - 30"	1021 (Natural)
1.0 - 2.5 PSI	1047 (Purple)